

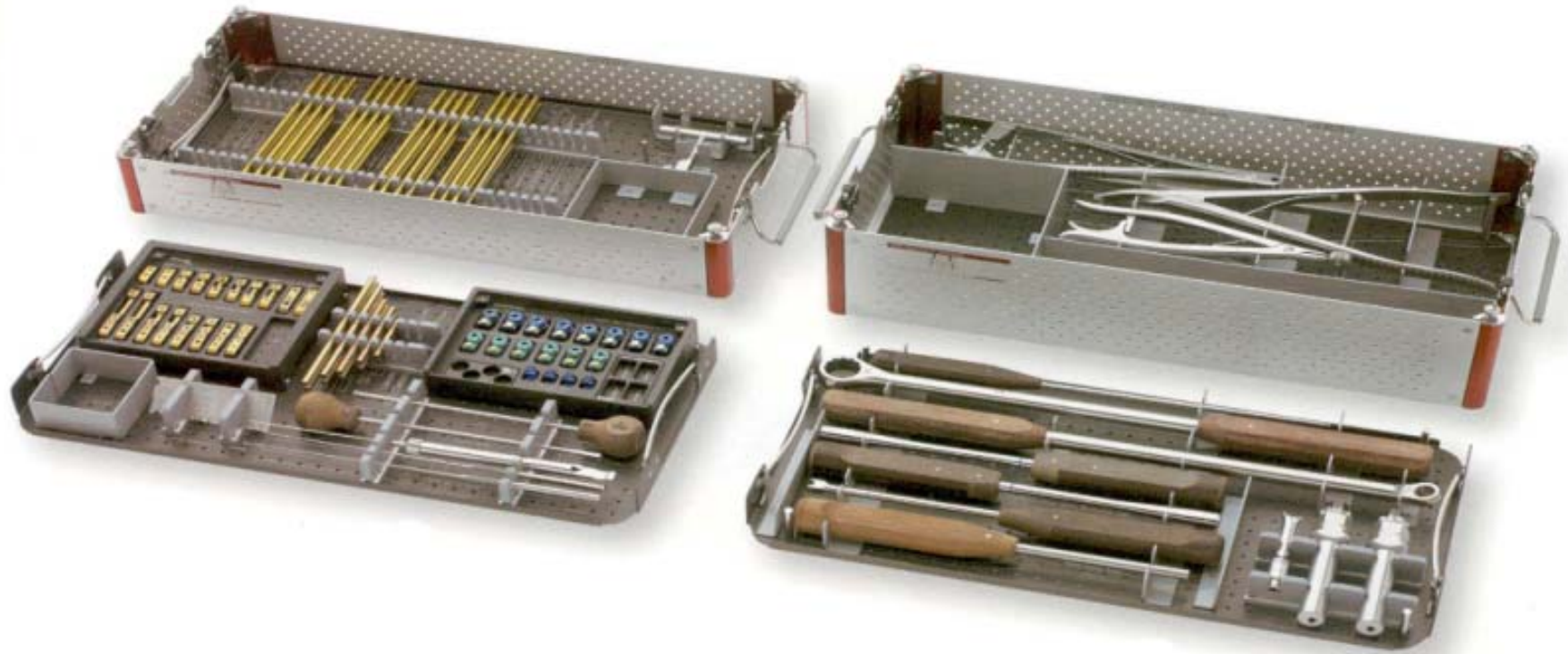


脊柱后路钉棒系统CanTLF 产品介绍





CanTLF 器械



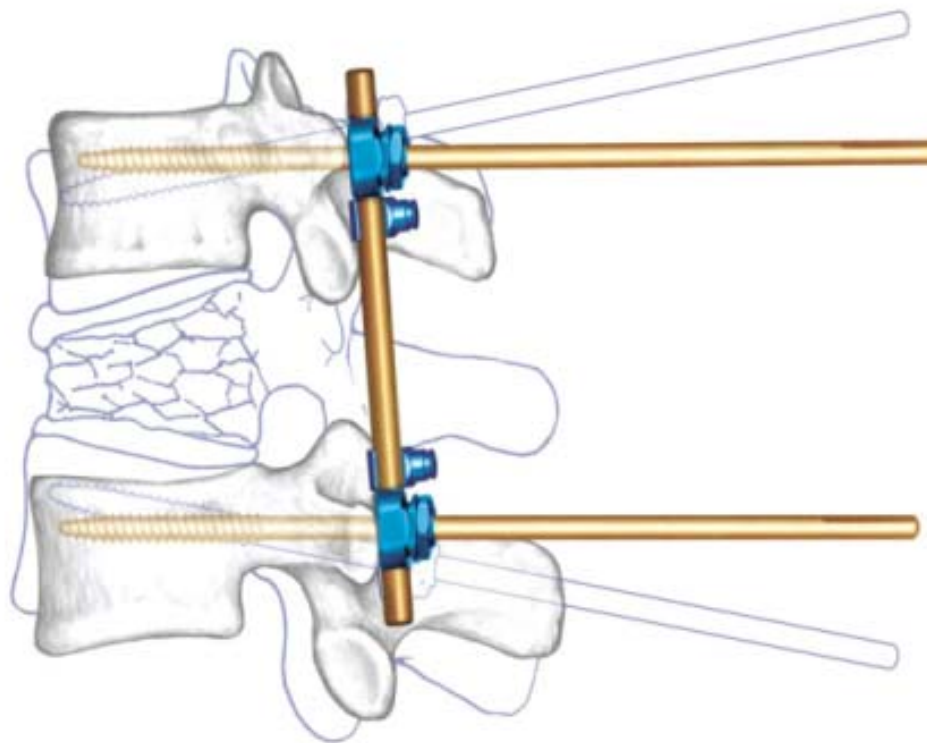


适应症

- 不稳定骨折
- 肿瘤
- 创伤后畸形
- 严重的（3 4）级L5 S1滑脱



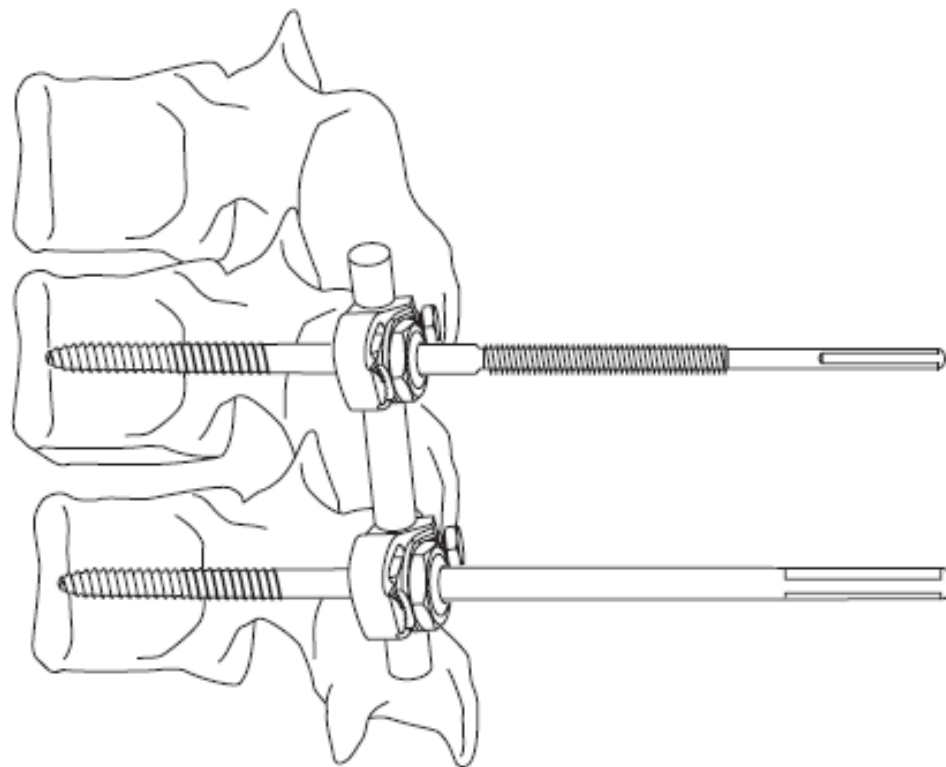
CanTLF 模块



胸腰椎骨折



CanTLF 模块



胸腰椎滑脱



Fracture 复位

- 骨折碎片复位
- 恢复前凸
- 恢复高度





Fracture 复位

- 骨折碎片复位
- 恢复前凸
- 恢复高度

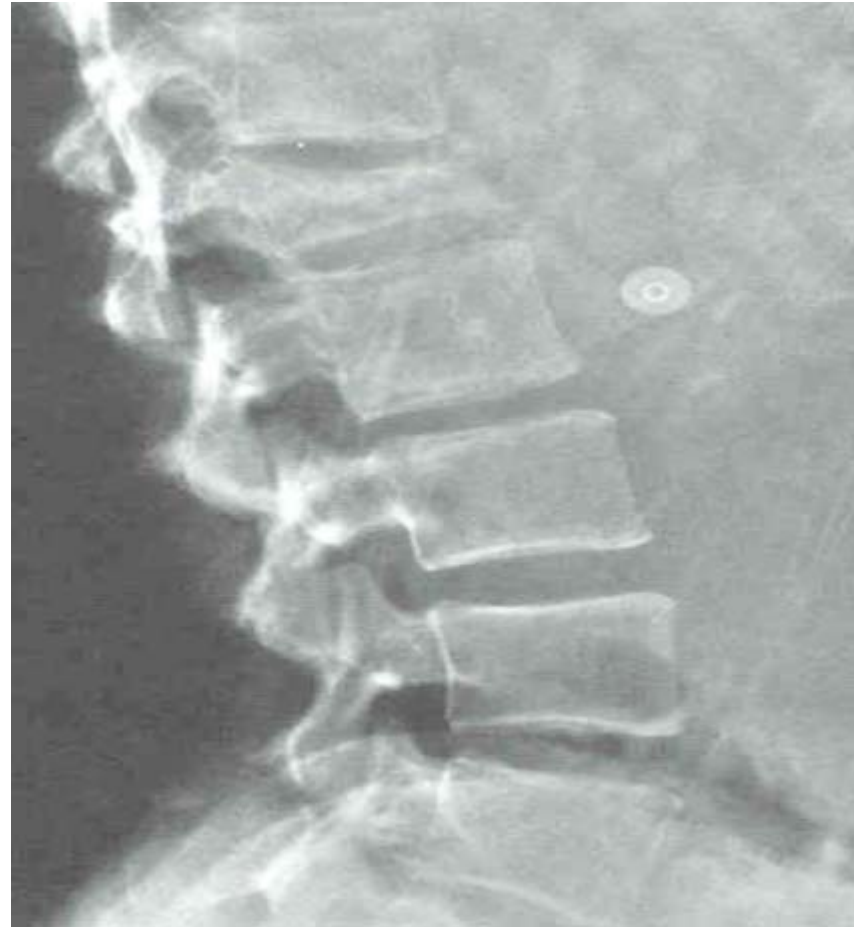


韧带整复



Fracture 复位

- 恢复前凸
- 恢复高度





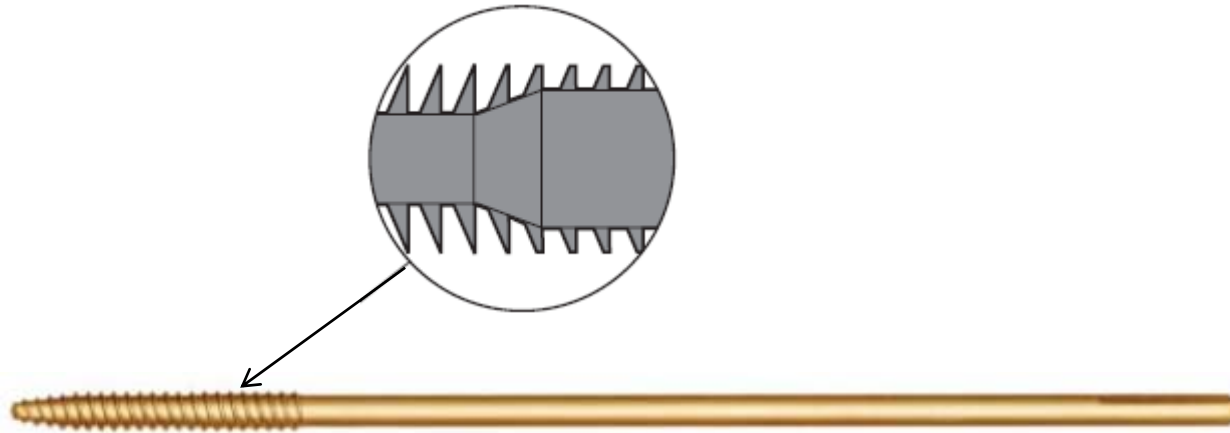
CanTLF 植入物 椎弓根螺钉



双线 双芯螺钉 多种直径 多种螺纹长度



CanTLF 植入物 椎弓根螺钉



双线 双芯螺钉 多种直径 多种螺纹长度



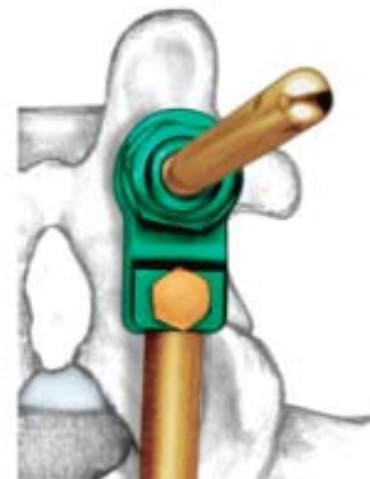
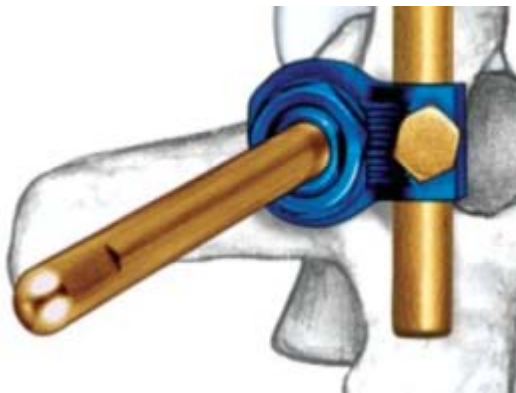
CanTLF 植入物 骨折夹块



标准夹块

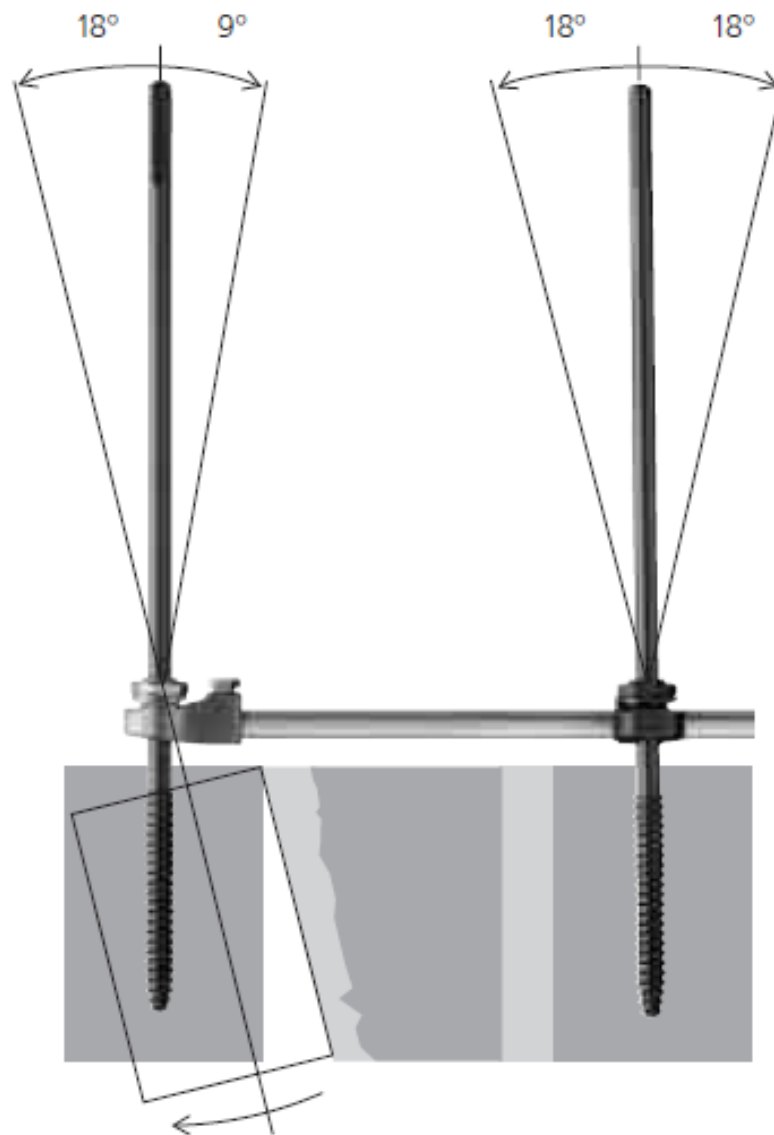


头端夹块





CanTLF 植入物 骨折夹块





CanTLF 植入物 骨折夹块

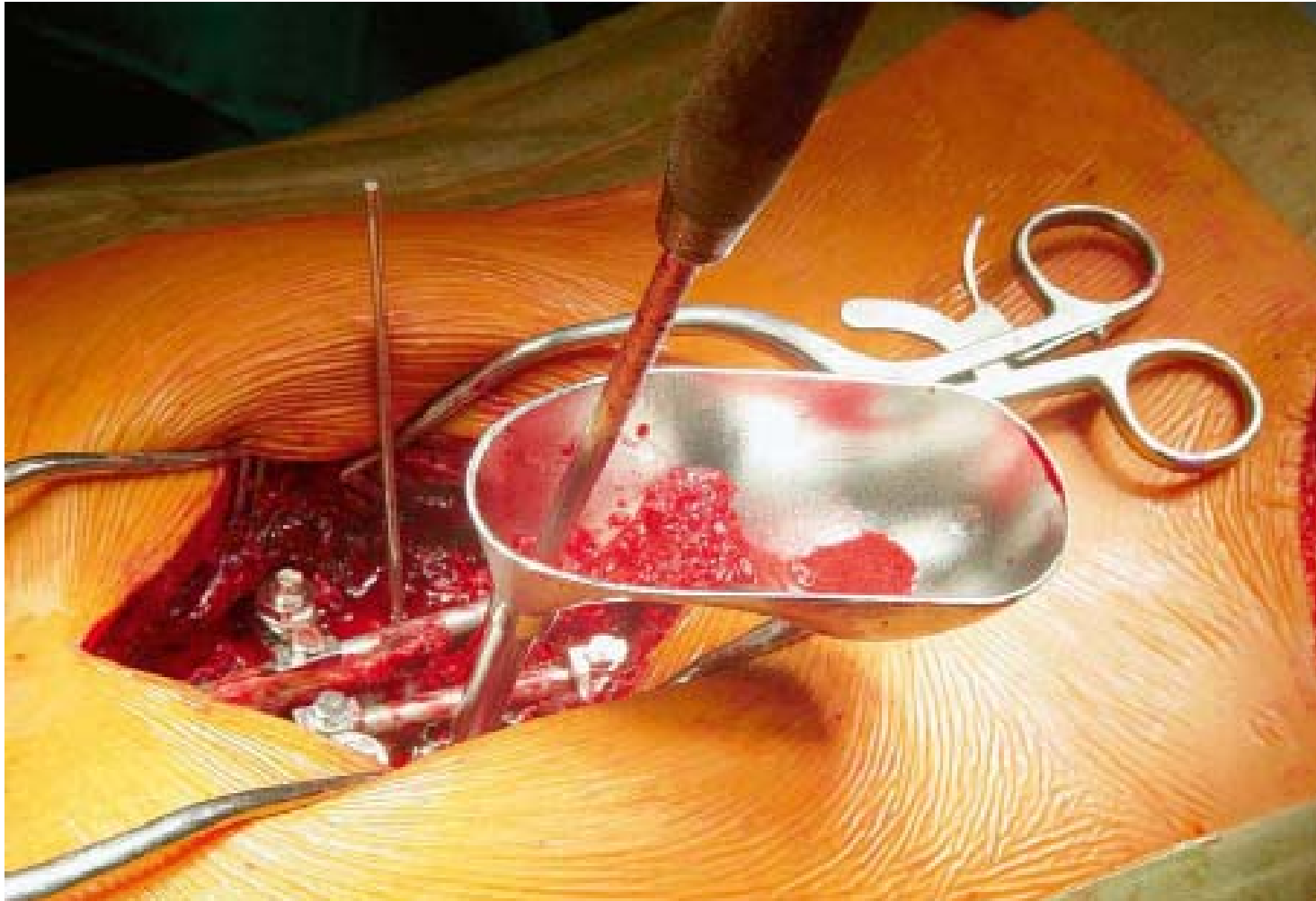


骨折夹





CanTLF 植入物 骨折夹块





CanTLF 植入物 固定棒



- 五种长度 50-150mm
- 直径6.0mm



CanTLF 操作技术



准备钉道

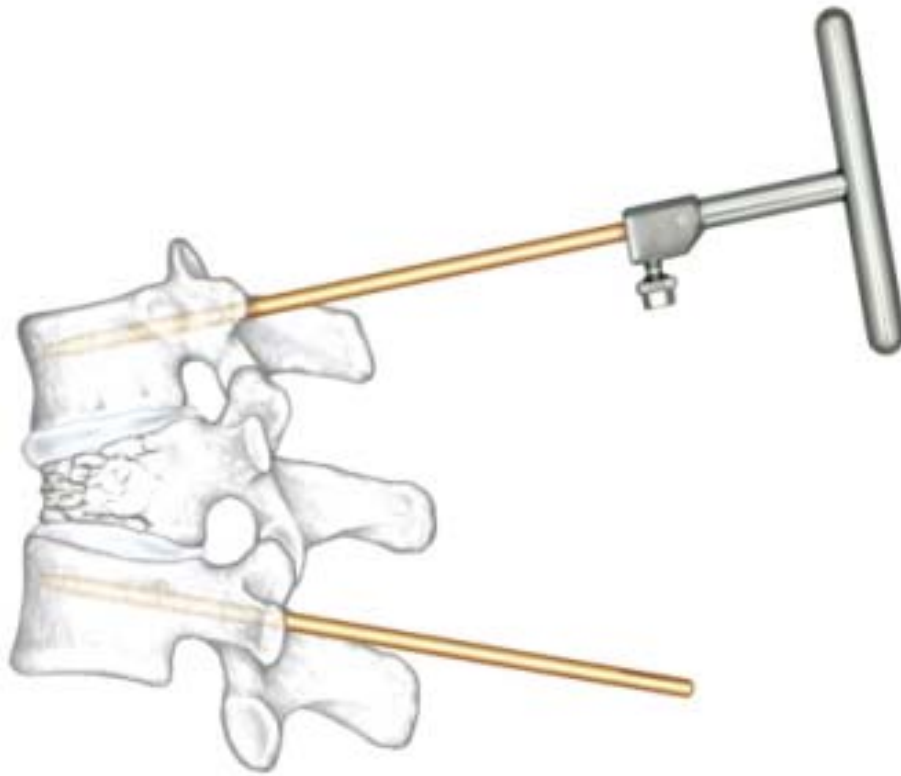




CanTLF 操作技术



准备上钉



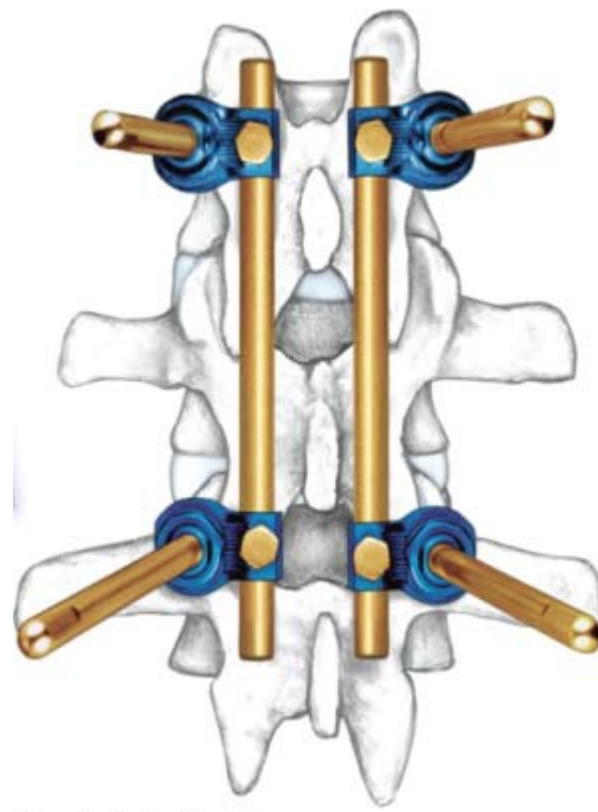


CanTLF 操作技术



结构装配

- 选择合适的钉夹
- 体外预装
- 无须弯板

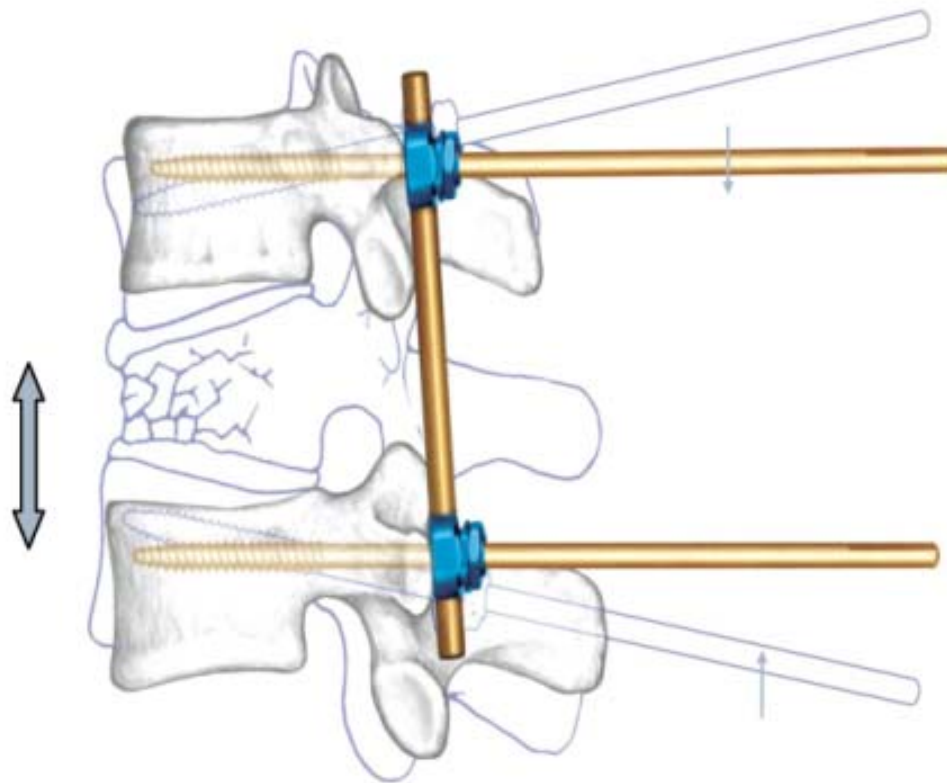




CanTLF 操作技术 恢复前柱



后壁无损伤情况下的矫正:

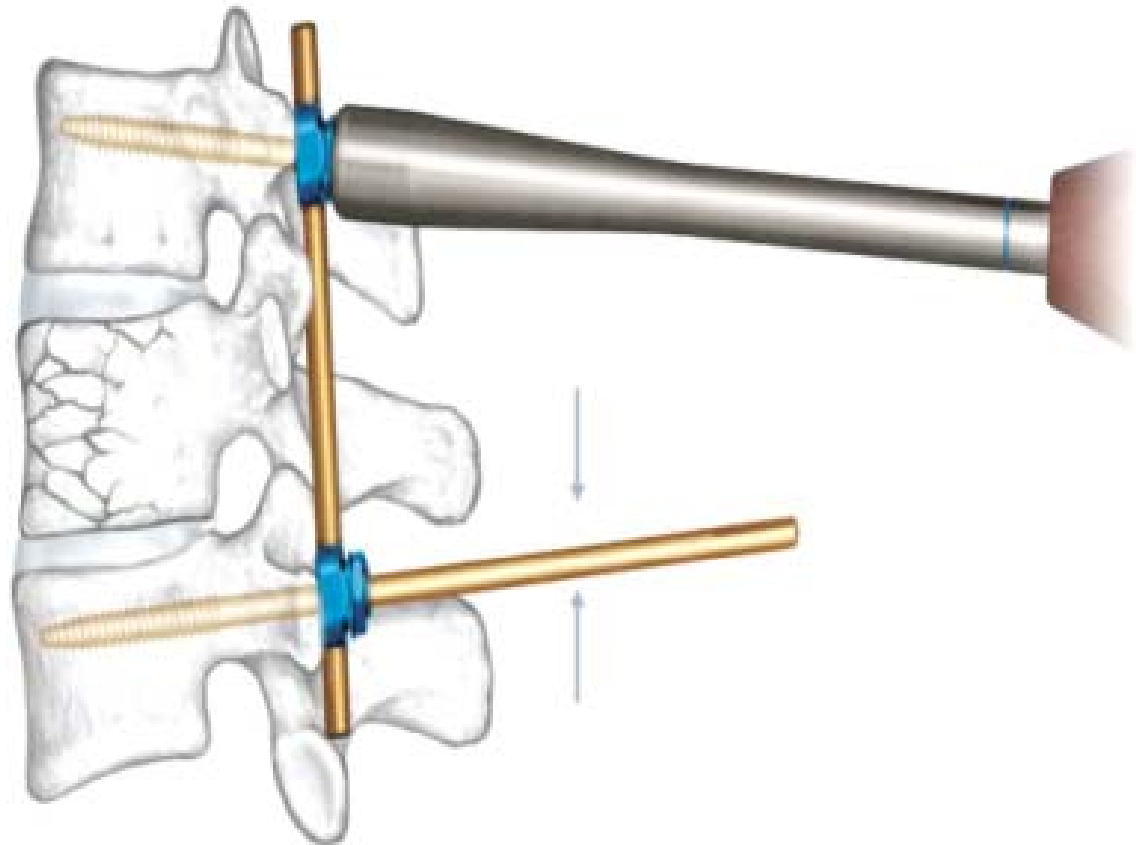




CanTLF 操作技术 恢复前柱



后壁无损伤情况下的矫正:

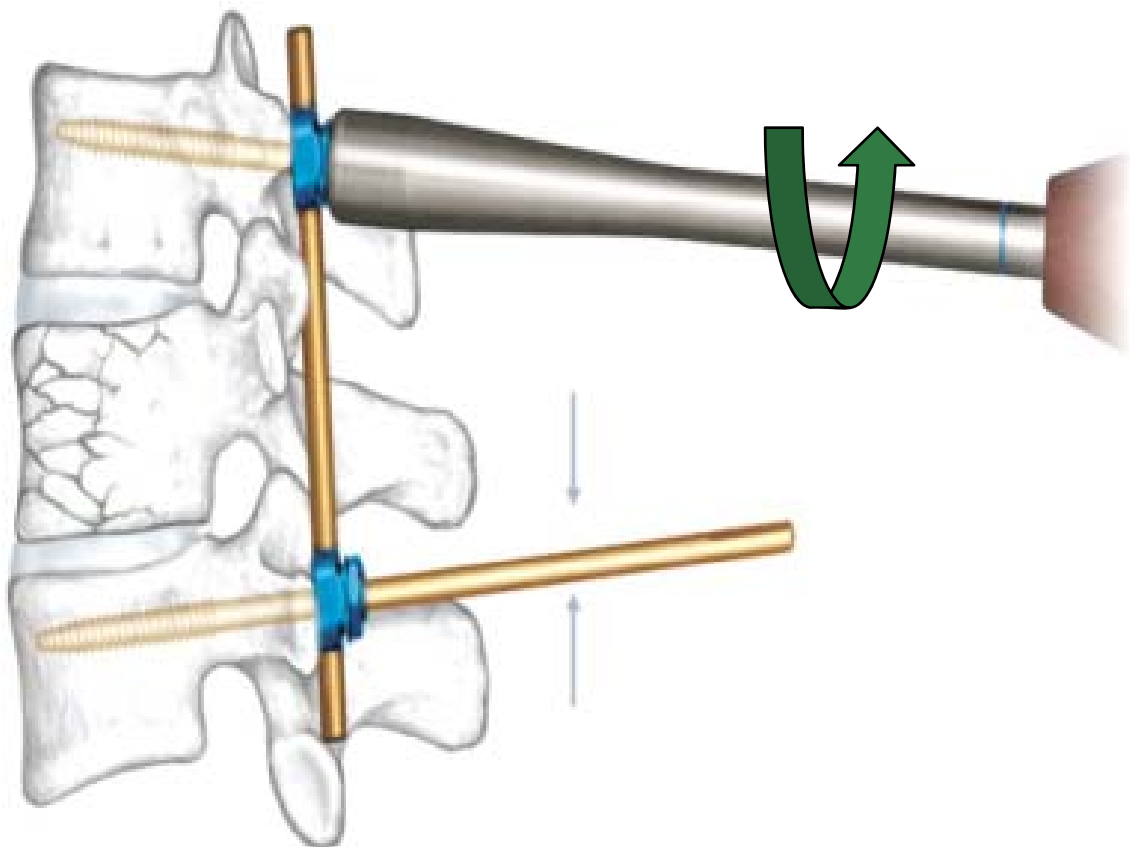




CanTLF 操作技术 恢复前柱



后壁无损伤情况下的矫正:

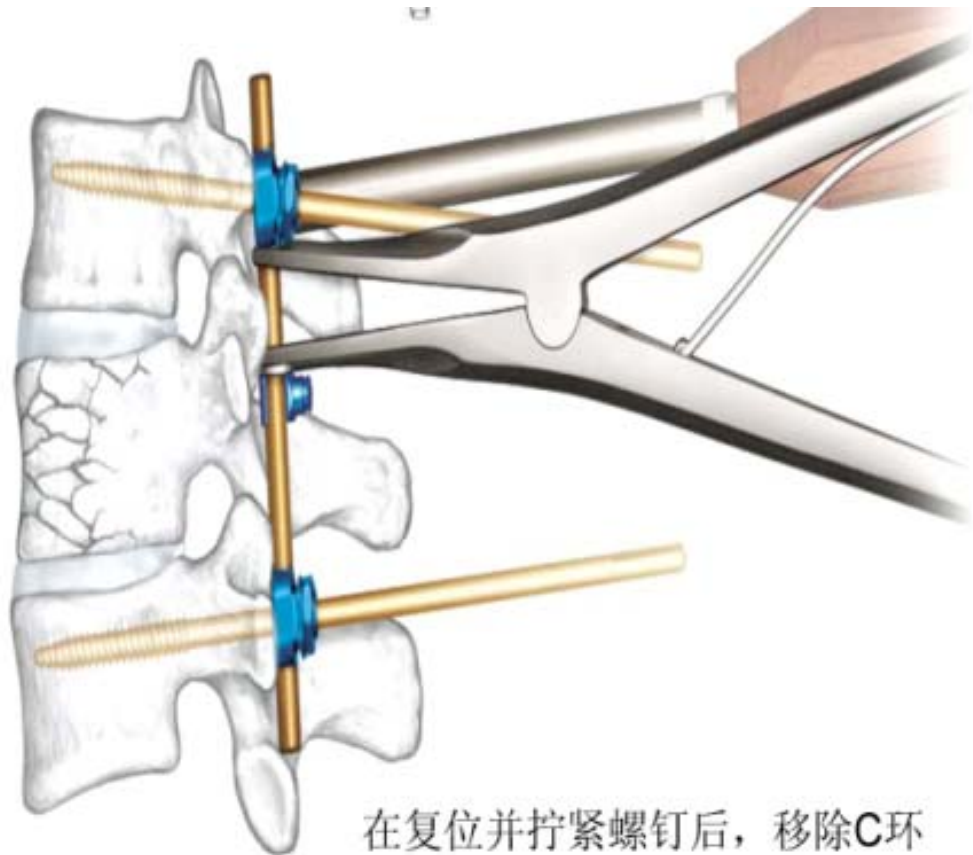




CanTLF 操作技术 恢复后柱



后壁无损伤情况下的矫正:



在复位并拧紧螺钉后，移除C环

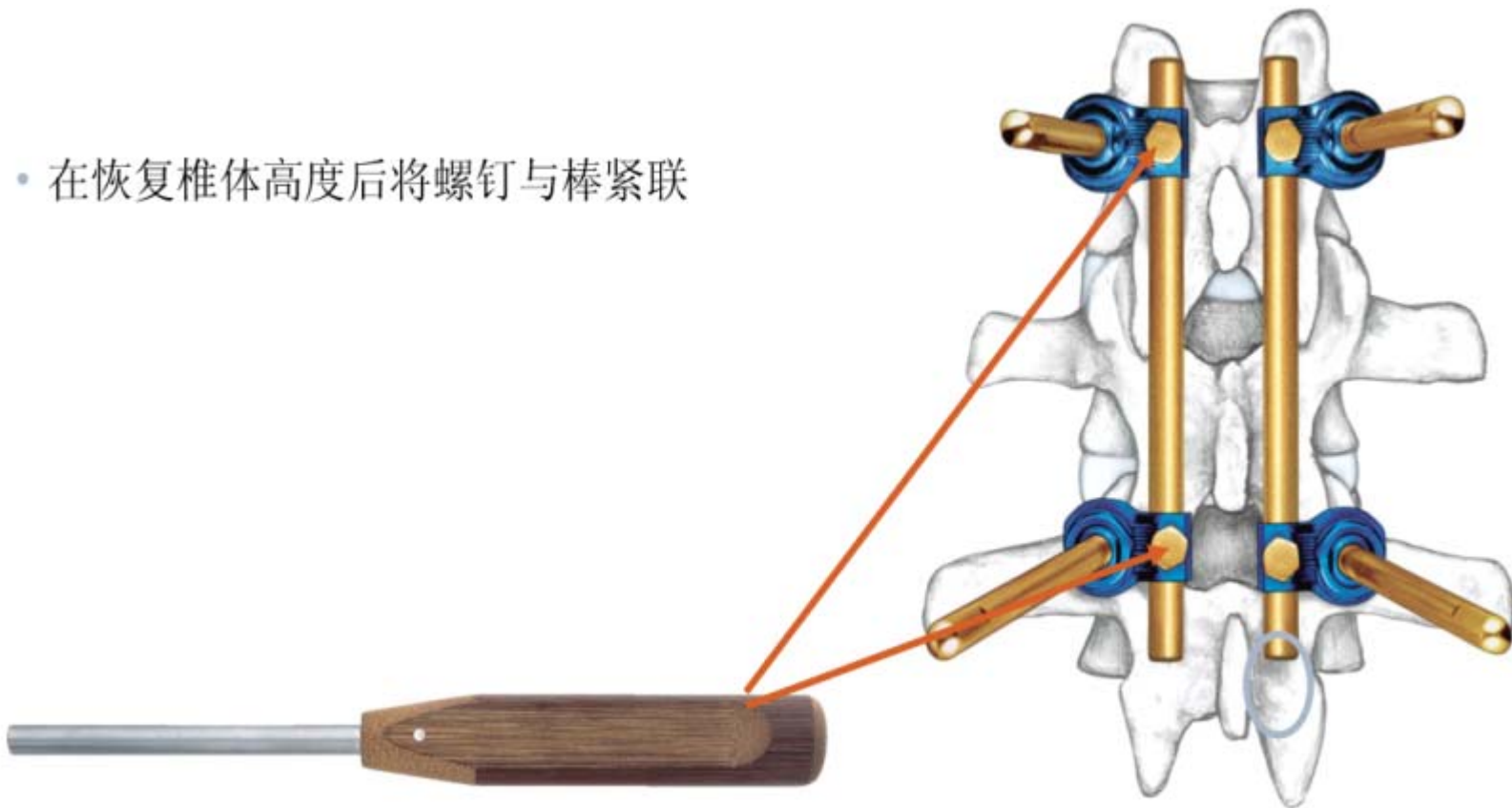


CanTLF 操作技术 恢复后柱



后壁无损伤情况下的矫正:

- 在恢复椎体高度后将螺钉与棒紧联

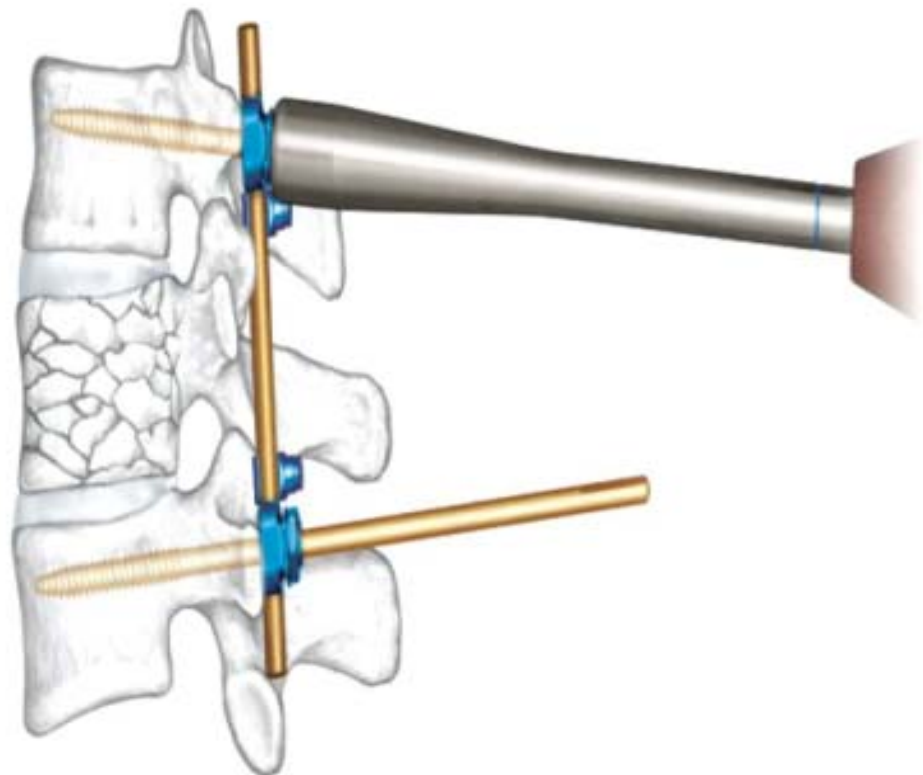




CanTLF 操作技术 恢复后柱



后壁骨折情况下的矫正:



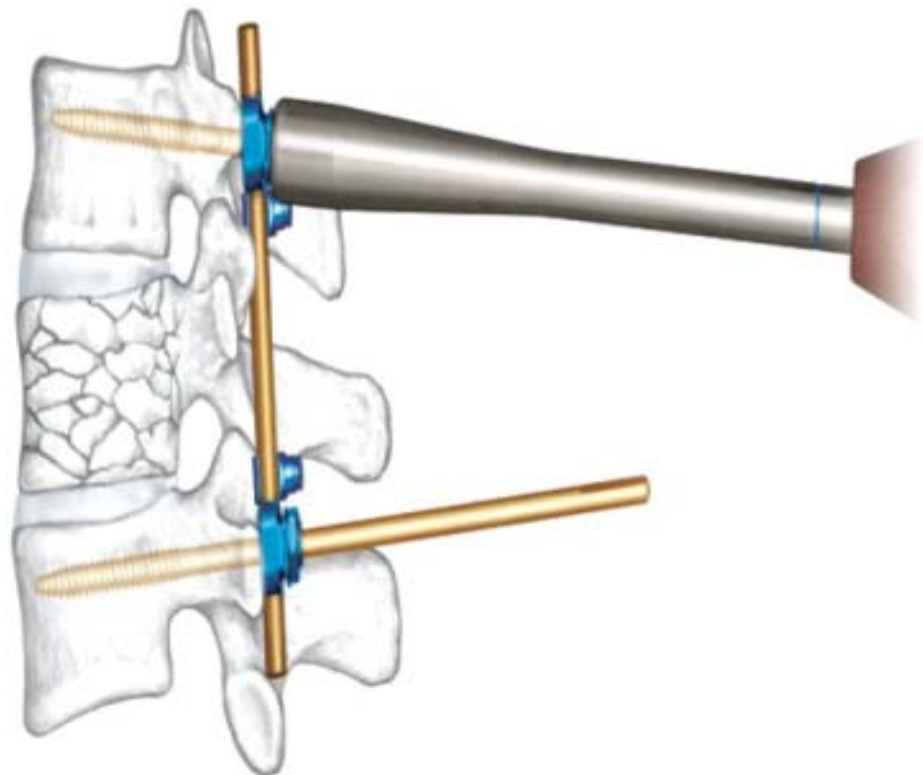


CanTLF 操作技术 恢复后柱



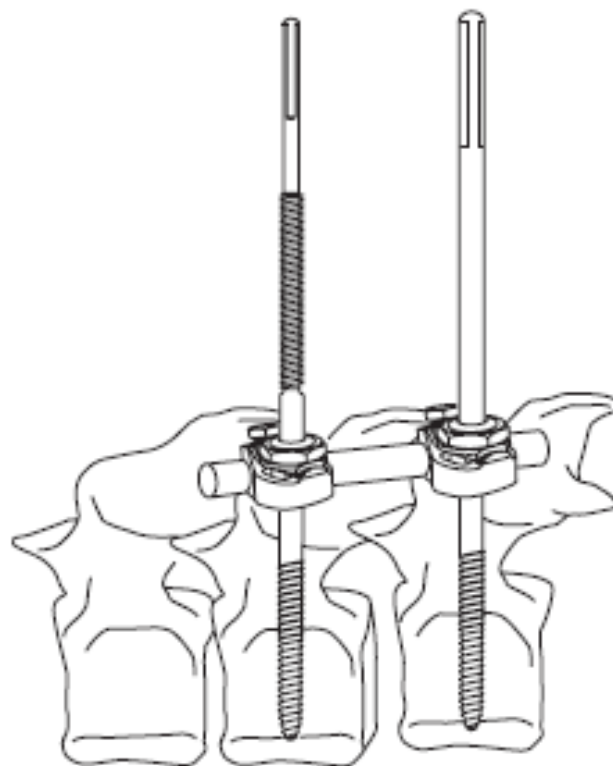
后壁骨折情况下的矫正:

保护椎体后缘防止骨折块进入椎管



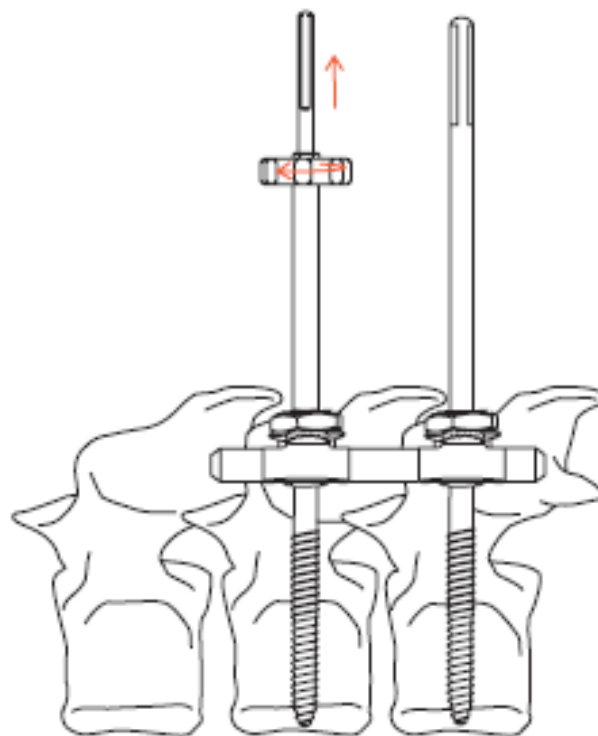


CanTLF 操作技术 滑脱提拉复位



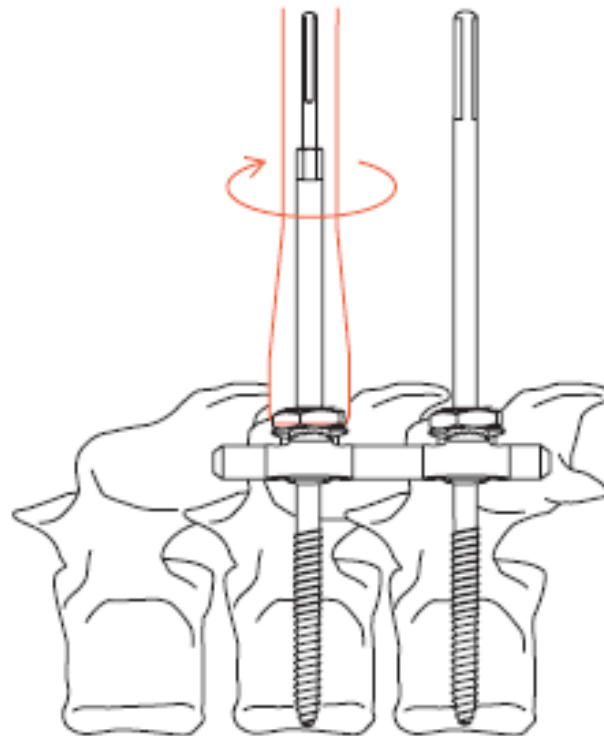


CanTLF 操作技术 滑脱提拉复位





CanTLF 操作技术 滑脱提拉复位

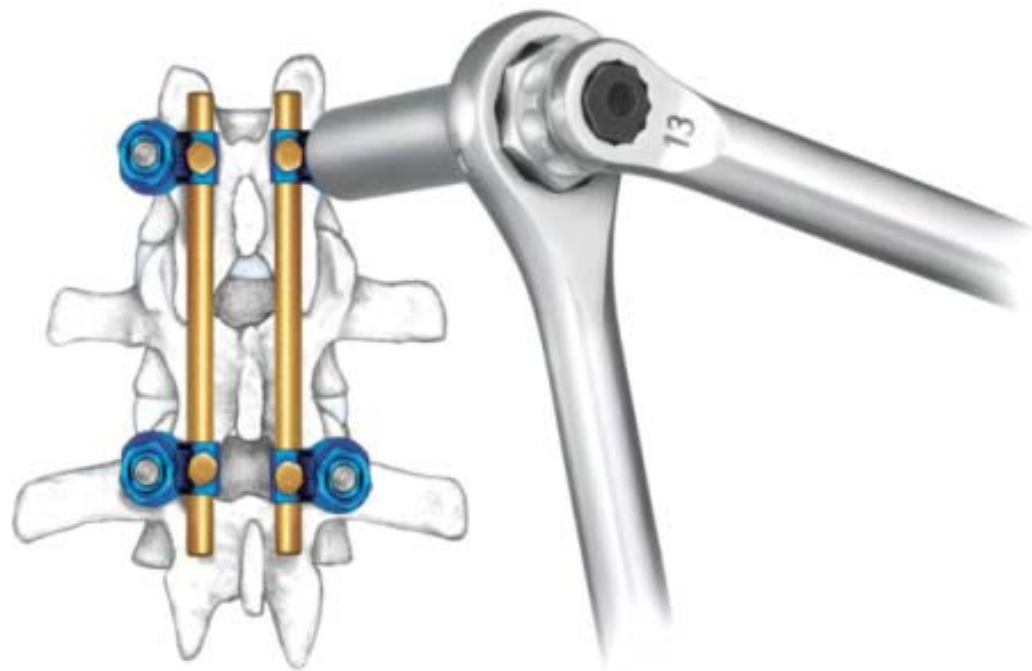




CanTLF 操作技术 椎弓根螺钉切割



切割完成后钉尾离固定夹2mm





CanTLF 操作技术 椎弓根螺钉切割





CanTLF 操作技术 椎弓根螺钉切割



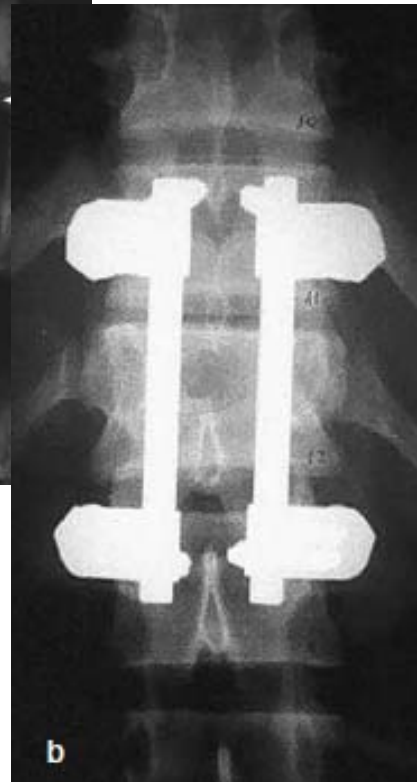
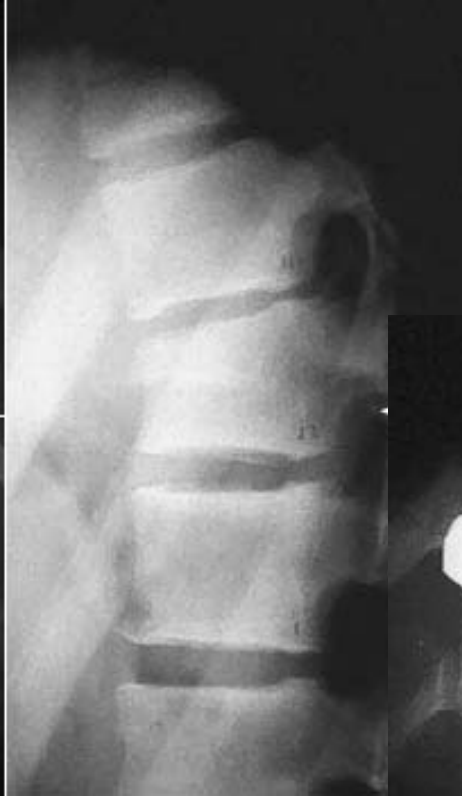


病例





病例



Thank You !